



PS/2



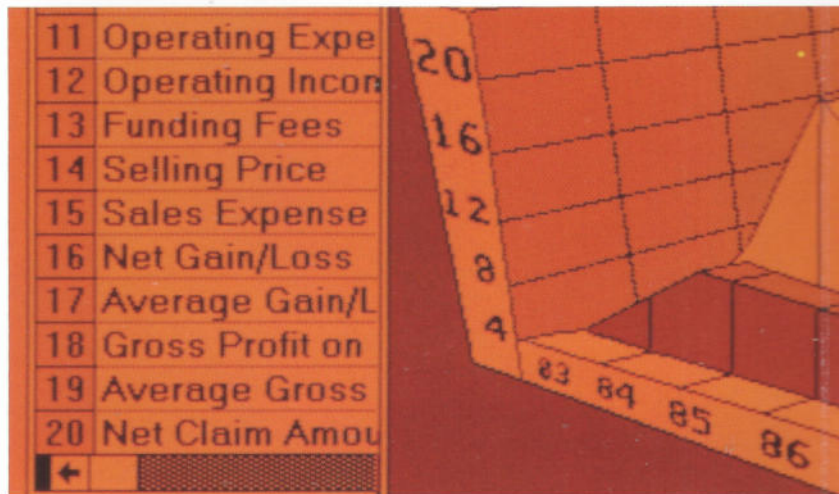
**IBM Personal System/2
Model P70 386**

Model

PS/2® power for the taking. That's what you get with IBM Personal System/2 Model P70 386. In fact, never before have so much desktop processing power, performance, function and reliability been packed into such a compact, easy-to-carry portable.

When you take Model P70 386 on the road, you travel with a 20 MHz 80386 microprocessor, up to 16Mb of high-speed memory, and Micro Channel™ Architecture. So you can support sophisticated DOS-based applications of every kind—as well as multitasking applications built around IBM Operating System/2.™ Or even programs that run under AIX™ Personal System/2.¹

A state-of-the-art gas plasma display brings PS/2 Model P70 386's built-in VGA (640x480) graphics capabilities into clear focus. It also supports up to 16 gray levels to add impact to onscreen information.



36

If you're pitching new business, you can make your presentation not only clear but colorful. Simply plug a PS/2 color display into Model P70 386 to take advantage of a palette of over 256,000 brilliant hues.

High levels of computing power, storage capacity and display capability aren't the complete story with Model P70 386. Compatibility and connectivity make this remarkable portable even more remarkable—and give you a computing solution that's equally at home in your office or your hotel room.

When you stop by your office with Model P70 386, you're immediately in step with colleagues who use PS/2s or IBM Personal Computers. You can share files and programs on a network. Exchange diskettes:² Use your choice of IBM personal printers, plotters, scanners and other peripherals. Built-in serial and parallel ports—just two of Model P70 386's many integrated features—make it easy.

There's more. A wide selection of connectivity adapters and emulation programs is available for Model P70 386. So you can easily tap into your company's mainframe.

That's the case even if you're miles away. Model P70 386 accommodates an optional Hayes™-compatible internal modem (no separate item to carry). You can download data from headquarters—or report the day's developments—practically whenever and wherever you like.

Right for today, ready for tomorrow, that's IBM Personal System/2 Model P70 386. Ask your IBM marketing representative or your IBM Authorized Remarketer of IBM advanced products to show you all the reasons why.

©IBM, Personal System/2, PS/2 and Quietwriter are registered trademarks of International Business Machines Corporation.

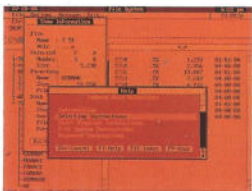
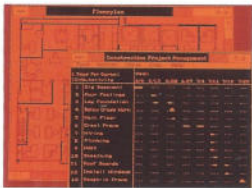
¹Micro Channel, Operating System/2, AIX, OS/2, Proprinter and Quickwriter are trademarks of International Business Machines Corporation. Hayes is a trademark of Hayes Microcomputer Products, Inc.

²Availability date of support for AIX Personal System/2 will be announced third quarter 1989.

³Diskette exchange between Model P70 386 and IBM Personal Computers is accomplished via an optional external 5.25-inch diskette drive.

⁴128Kb of this memory is reserved for hardware system use.

**With Model P70 386,
you're in position to
support even the
most sophisticated
programs—such as
the IBM OS/2™
Presentation
Manager.**



IBM Personal System/2 Model P70 386 at a glance

Machine numbers	8573-061	8573-121
80386 microprocessor	20 MHz, 0-2 wait states	20 MHz, 0-2 wait states
Optional 80387 Math Co-Processor	20 MHz	20 MHz
Memory (RAM)²		
Standard-maximum on system board	4Mb-8Mb (85ns)	4Mb-8Mb (85ns)
System maximum	16Mb	16Mb
Integrated display	16-gray-level gas plasma; high contrast ratio; dark background	
Integrated functions	128Kb permanent memory (ROM), clock/calendar, Video Graphics Array (VGA) and display port, serial port, parallel port, pointing device port, keyboard port, ESDI disk controller, and diskette controller with external storage device port	
System expansion	Two available expansion slots (one 32-bit full-size; one 16-bit half-size)	
Operating systems	DOS 3.3 or 4.0, IBM Operating System/2 Standard Edition 1.1 or Extended Edition 1.1, AIX Personal System/2	
Storage		
Standard	One 1.44Mb 3.5-inch diskette drive, 60Mb (27ms) fixed disk	One 1.44Mb 3.5-inch diskette drive, 120Mb (23ms) fixed disk
Optional	IBM 1.2Mb 5.25" External Diskette Drive (supported via an adapter card), IBM 360Kb 5.25" External Diskette Drive (supported via the external storage device port and a cable connector), IBM 3363 Optical Disk Drive, IBM 6157 Streaming Tape Drive	
Text/graphics support	VGA supports 640 x 480 graphics mode plus all CGA, EGA and MCGA modes and provides up to 16 gray levels (gas plasma), 64 shades of gray (monochrome), or 256 colors from a palette of over 256,000 (color)	
Display modes		
Gas plasma display	VGA, CGA, EGA and MCGA compatibility, 640 x 480 x 16 gray levels	
Color/monochrome external displays	All VGA, CGA, EGA and MCGA modes, including: 320 x 200 pels x 256 colors—all points addressable 640 x 480 pels x 16 colors—all points addressable 9 x 16 character box—16 colors (text)	
Keyboard	101 keys, including 12 function keys, 3 lighted mode indicators; 14-inch coiled cable	
Supported displays	IBM PS/2 Color Displays 8512, 8513 and 8514, and Monochrome Displays 8503 and 8507 (8514 and 8507 VGA mode only)	
Supported printers	IBM Proprinter™ family, IBM Quietwriter® Printers, IBM Pageprinter, IBM Quickwriter™ Printer	
Communications support	IBM 300/1200/2400 Internal Modem/A, IBM 300/1200 Internal Modem/A, IBM Token-Ring Network Adapter/A, IBM PC Network Adapter II/A, IBM PC Network Adapter II/A Frequency 2/Frequency 3, IBM PC Network Baseband Adapter/A, IBM 3270 Connection, IBM System 36/38 Workstation Emulation Adapter/A, IBM Dual Async Adapter/A, IBM Multi-Protocol Adapter/A, Rolmphone 244PC	
Power supply	85-watt worldwide autosensing and autoswitching	
Size	Approx. 12"H x 18.3"W x 5"D (305mm x 465mm x 126mm); approx. 20 lbs. (9 kg)	



© IBM Corp. 1989

International Business Machines Corporation
US Marketing & Services
1133 Westchester Avenue
White Plains, NY 10604

Printed in the United States of America 4-89

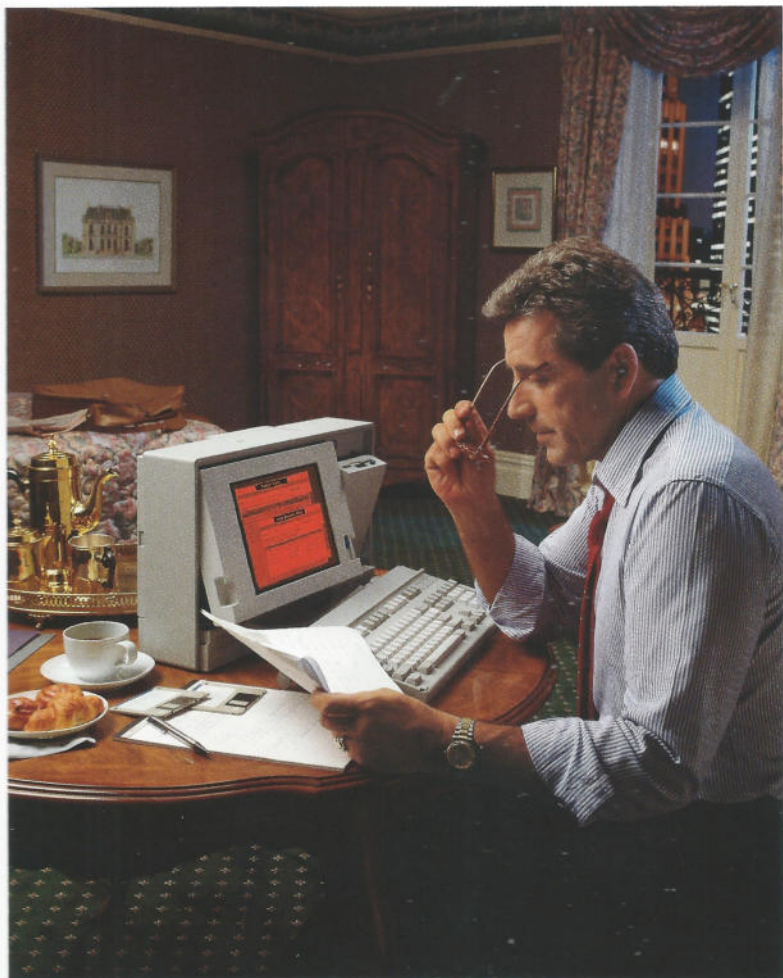
All Rights Reserved

G360-2826-00

References in this publication to IBM products or services do not imply that IBM intends to make them available outside the United States.

IBM Personal System/2® Model P70 386 delivers the power and performance of the desktop Model 70 386 in an easy-to-carry, briefcase-size system. It also offers the storage capacity, the graphics, even the communications capability you need to take your business beyond the office.

C O N N E C T I V I T Y



9:30 PM

Out of town doesn't mean out of touch. With PS/2 Model P70 386's optional internal modem, the entire resources of your company's mainframe are just a phone call away.



P O R T A B I L I T Y

C O M P A T I B I L I T Y



8:15 PM

**With Model P70 386
as your traveling
companion, you take
your business right to
your client's home. All
your important files
and programs are
conveniently stored
on the portable's
60Mb or 120Mb
fixed disk.**

talks.

N C E



2:30 PM

Closing the deal is
easy. That's because
PS/2 Model P70 386's
built-in VGA graphics
give you a dynamic
way to demonstrate
all your company
can deliver—
especially when
you connect a PS/2
color display.

for the

P E R F O R M A



8:30 AM

Your day begins at the office—where you run several programs before putting the final touches on a presentation. Thanks to PS/2 Model P70 386's incredible speed, you're soon ready for the road.

PS/2 power

Right for today, ready for tomorrow



IBM
Personal
System/2
Model
P70 386

IBM